



Oatinformation

Canada Oat and Oat Product Exports

Wednesday, May 4, 2022

For greater detail of Exports by HSC codes contact
us at randy@oatinformation.com

HSC Codes and Descriptions

HS8	HS8 Description
1004.00.10	Oats, seed
1004.00.90	Oats, except seed
1004.00.90	Oats, nes
1004.10.00	Oats, seed for sowing
1004.90.00	Oats, other than seed for sowing
1103.19.10	Oat groats and meal
1104.12.00	Oats, rolled or flaked grains
1104.22.00	Oats, hulled,pearled,sliced or kibbled

Source: Statistics Canada, International Trade Division

Canada Oat and Oat Product Export Summary

000 mt	Crop Year (Aug-Jul)							Year to-date (Aug-Mar)			
	16/17	17/18	18/19	19/20	20/21	5 yr avg	CAGR 5 yr	21/22	20/21	Chge	MT Chge
Oat products to U.S.*	360	398	399	444	511	422	7.3%	374	326	14.7%	48.0
Oat products overseas*	60	68	62	74	89	71	8.1%	41	63	-35.0%	(22.1)
Total oat products	420	466	461	518	600	493	7.4%	415	389	6.7%	26.0
Oats U.S. Milling Industry	1,255	1,198	1,013	1,028	1,002	1,099	-4.4%	670	807	-17.1%	(137.8)
Oats Overseas	130	152	304	277	525	277	32.2%	86	403	-78.8%	(317.8)
Oats U.S. Horse Demand	257	282	428	486	495	390	14.0%	266	320	-16.8%	(53.7)
Total raw oats	1,642	1,631	1,745	1,791	2,022	1,766	4.3%	1,021	1,531	-33.3%	(509.3)
Grand Total	2,062	2,097	2,206	2,309	2,622	2,259	4.9%	1,436	1,920	-25.2%	(483.3)

*Flake, flour and groats

Canadian oat product exports up sharply MOM and remain on a record CY pace. Raw oat export pace up slightly this month but remains down 33% YOY due to record drought last year

- Total Canadian raw oat exports year to-date (Aug-Mar) are estimated at 1,021 ThMt, down 33.3% YOY. This compares with the YOY decline last month of 35%. The pace of exports needs to slow into crop year end on July 31, 2022 as the North American oat market is chewing through very tight supplies at a record pace putting Canadian 2021/22 oat end stocks on a negative path (which is not possible).
- Overseas raw oat exports remain sharply lower, down 78.8% YOY (80.3% last month). Implied exports to US millers are down 17.1% YOY, the pace holding steady this month. Implied exports to US horse markets are down 16.8% YOY versus 19.9% last month. Total oat exports remain on pace to finish at 1,200 to 1,300 ThMt for the full 2021/22 crop year. If realized, this would be down 41% YOY and 32% below the five-year average. Interesting to note Canada exported 15,000 MT of oats to China with no protocol in place for milling quality oats. Assuming this "seed"...wink wink!
- Offshore or non-US raw oat exports are down 78.3%. This is precisely what the Canadian oat market needed to ration the very tight oat supplies. We are not expecting any major increases in this sector until new crop 2022/23 at the earliest.
- As expected, total oat product exports remain strong up 14.7% YOY, versus up 6.2% last month. The pace, if it holds, will be another record high.
- Exports to the US remain on a record pace up 14.7% (unchanged from last month), while offshore exports are down 35% (36.3% last month). We are expecting full 2021/22 oat product exports to climb to another record high as consumers continue to look at oat foods/beverages as healthy and environmentally sound.
- The export data above YTD continues to point to negative Canadian oat end stocks on July 31, 2022, which we know is not possible. This suggests Stats Can has understated 2021 oat production.

Raw Oat Exports

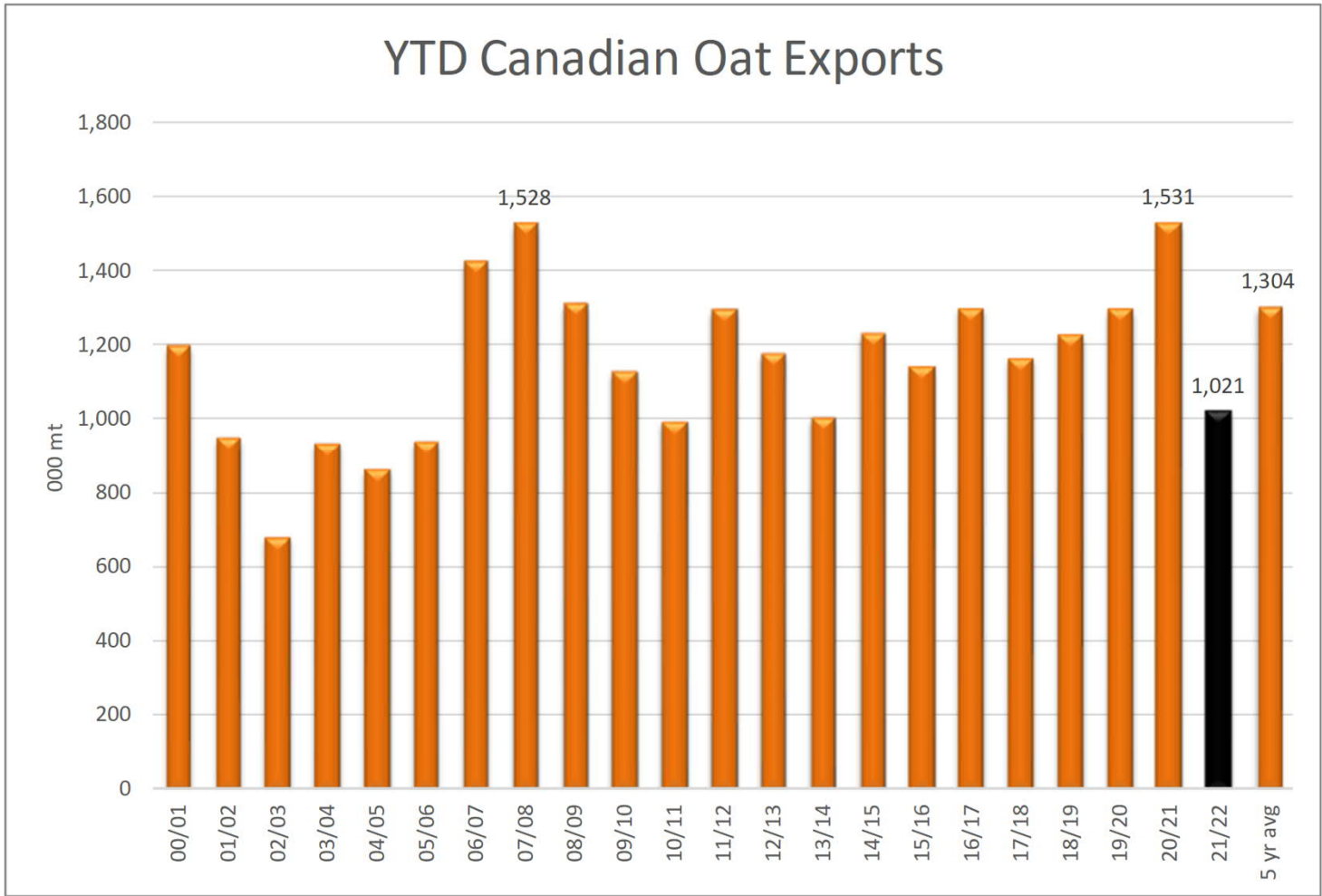


Canada Oat Exports - Top 15

000 mt	Crop year Aug-Jul						5 yr CAGR	% of total	Year to-date (Aug-Mar)			
	16/17	17/18	18/19	19/20	20/21	5 yr avg			21/22	20/21	Chge	MT Chge
United States of America	1,511.9	1,479.6	1,441.1	1,513.9	1,497.4	1,488.8	-0.2%	84.3%	935.6	1,127.1	-17.0%	(191.5)
Mexico	34.9	76.1	141.8	109.8	175.2	107.6	38.1%	6.1%	28.3	142.2	-80.1%	(113.9)
Japan	28.2	25.8	32.0	35.0	34.5	31.1	4.1%	1.8%	20.8	24.0	-13.3%	(3.2)
Peru	14.0	-	23.0	34.0	46.0	23.4	26.9%	1.3%	8.2	37.0	-77.8%	(28.8)
Korea, South	12.3	24.8	25.6	22.7	10.5	19.2	-3.2%	1.1%	7.7	6.7	15.0%	1.0
United Arab Emirates	8.5	1.7	30.4	39.9	19.7	20.0	18.3%	1.1%	0.3	18.5	-98.3%	(18.1)
Ecuador	19.0	17.4	13.5	-	9.6	11.9	-12.8%	0.7%	-	9.1	-100.0%	(9.1)
China	10.6	4.9	4.2	9.6	12.4	8.3	3.2%	0.5%	15.2	7.9	94.1%	7.4
South Africa, Republic of	-	-	23.4	0.3	0.1	4.8		0.3%	-	0.1	-100.0%	(0.1)
Sri Lanka	-	0.1	6.9	10.4	11.0	5.7		0.3%	4.5	7.6	-41.2%	(3.1)
Chile	0.0	-	-	4.4	201.7	41.2	445.5%	2.3%	-	146.5	-100.0%	(146.5)
Cuba	0.3	0.4	0.3	7.4	-	1.7	-100.0%	0.1%	-	-	0.0%	0.0
Philippines	0.3	0.1	0.4	0.8	1.2	0.6	30.8%	0.0%	0.2	0.9	-79.5%	(0.7)
Taiwan	0.01	-	0.96	0.51	0.66	0.4	123.2%	0.0%	-	0.7	-100.0%	(0.7)
Saudi Arabia	0.9	-	-	-	1.0	0.4	2.7%	0.0%	-	1.0	-100.0%	(1.0)
Grand Total	1,641.8	1,631.4	1,744.6	1,790.6	2,022.4	1,766.2	4.3%	100.0%	1,021.2	1,530.6	-33.3%	(509.3)

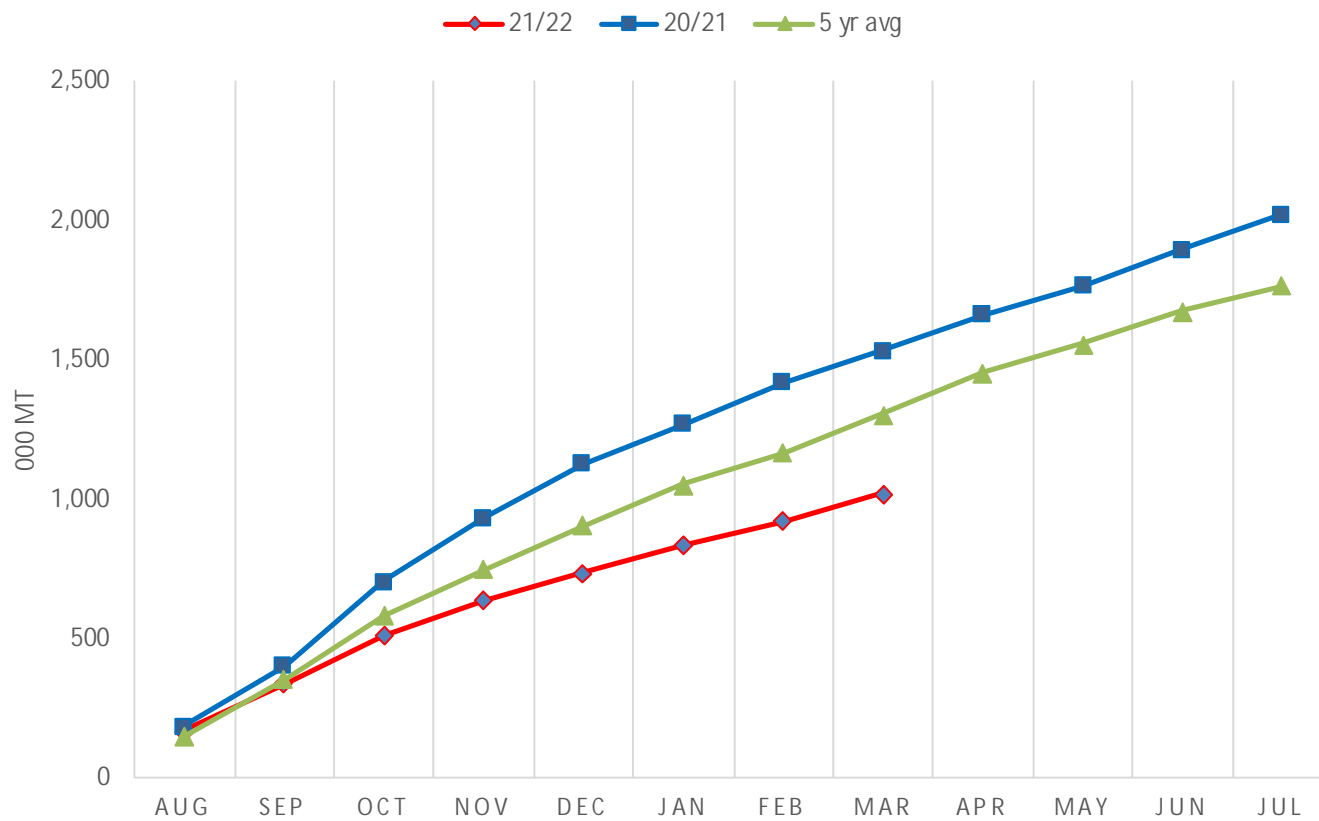
Canada Overseas Oat Exports - Top 20

metric tonnes	Crop Year Aug-Jul						Year to-date (Aug-Mar)					
	16/17	17/18	18/19	19/20	20/21	5 yr avg	5 yr CAGR	% of total	21/22	20/21	Chge	MT Chge
Chile	42	-	-	-	-	41,222	445.5%	14.9%	-	146,514	-100.0%	(146,514.2)
China	10,567	4,943	4,185	9,636	12,368	8,340	3.2%	3.0%	15,241	7,851	94.1%	7,390.8
Cuba	331	406	312	-	-	1,696	-100.0%	0.6%	-	-	0.0%	0.0
Ecuador	19,025	17,410	13,502	-	9,590	11,905	-12.8%	4.3%	-	9,142	-100.0%	(9,141.8)
Japan	28,249	25,832	32,013	35,036	34,476	31,121	4.1%	11.2%	20,822	24,015	-13.3%	(3,192.5)
Korea, South	12,333	24,785	25,567	22,707	10,480	19,174	-3.2%	6.9%	7,656	6,655	15.0%	1,000.4
Mexico	34,929	76,099	141,780	109,805	175,196	107,562	38.1%	38.8%	28,310	142,196	-80.1%	(113,886.5)
Peru	14,000	-	23,009	34,049	46,045	23,421	26.9%	8.4%	8,220	37,045	-77.8%	(28,824.6)
Philippines	318	85	356	-	-	556	30.8%	0.2%	182	888	-79.5%	(706.2)
Saudi Arabia	912	-	-	-	-	391	2.7%	0.1%	-	1,042	-100.0%	(1,041.9)
South Africa, Republic of	-	-	23,422	300	79	4,760	-	1.7%	-	79	-100.0%	(79.0)
Sri Lanka	-	125	6,901	10,425	10,979	5,686	-	2.0%	4,488	7,638	-41.2%	(3,149.4)
Taiwan	12	-	955	-	-	428	123.2%	0.2%	-	653	-100.0%	(652.9)
Trinidad and Tobago	150	150	125	-	-	120	-100.0%	0.0%	75	-	0.0%	75.0
United Arab Emirates	8,511	1,684	30,444	39,853	19,734	20,045	18.3%	7.2%	319	18,458	-98.3%	(18,138.9)
Grand Total	129,938	151,779	303,532	276,586	525,017	277,370	32.2%	100.0%	85,666	403,493	-78.8%	(317,826.6)



Year to-date (Aug-Mar)

CUMMULATIVE CANADIAN OAT EXPORTS

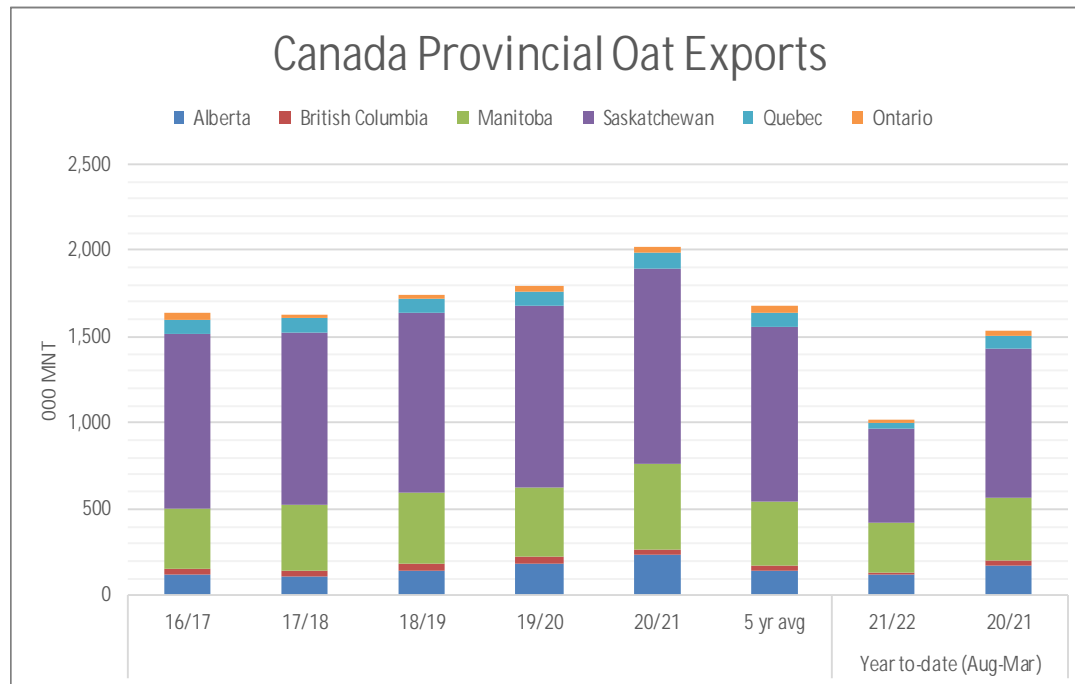


Canadian Provincial Oat Exports

Crop Year Aug-Jul

Year to-date (Aug-Mar)

000 mt	Crop Year Aug-Jul						5 yr avg	5 yr CAGR	% of total	Year to-date (Aug-Mar)			
	16/17	17/18	18/19	19/20	20/21	21/22				20/21	Chge	MT Chge	
Alberta	120.0	114.4	147.2	186.3	233.8	138.7	8.2%	8.3%	121.8	175.2	-30.4%	(53.3)	
British Columbia	29.0	28.3	31.8	34.8	32.7	30.6	3.7%	1.8%	12.7	26.6	-52.5%	(14.0)	
Manitoba	356.5	384.5	418.5	401.8	495.3	378.6	3.9%	22.6%	283.7	358.7	-20.9%	(75.0)	
Saskatchewan	1,005.4	998.1	1,043.5	1,056.3	1,137.4	1,012.4	2.0%	60.4%	545.2	874.8	-37.7%	(329.5)	
Quebec	86.9	81.9	80.9	83.9	88.1	82.8	0.9%	4.9%	39.0	69.3	-43.7%	(30.3)	
Ontario	43.9	24.3	22.8	27.5	35.1	32.9	-9.7%	2.0%	18.8	26.0	-27.8%	(7.2)	
Grand Total	1,641.8	1,631.4	1,744.6	1,790.6	2,022.4	1,675.9	2.6%	100.0%	1,021.2	1,530.6	-33.3%	(509.3)	



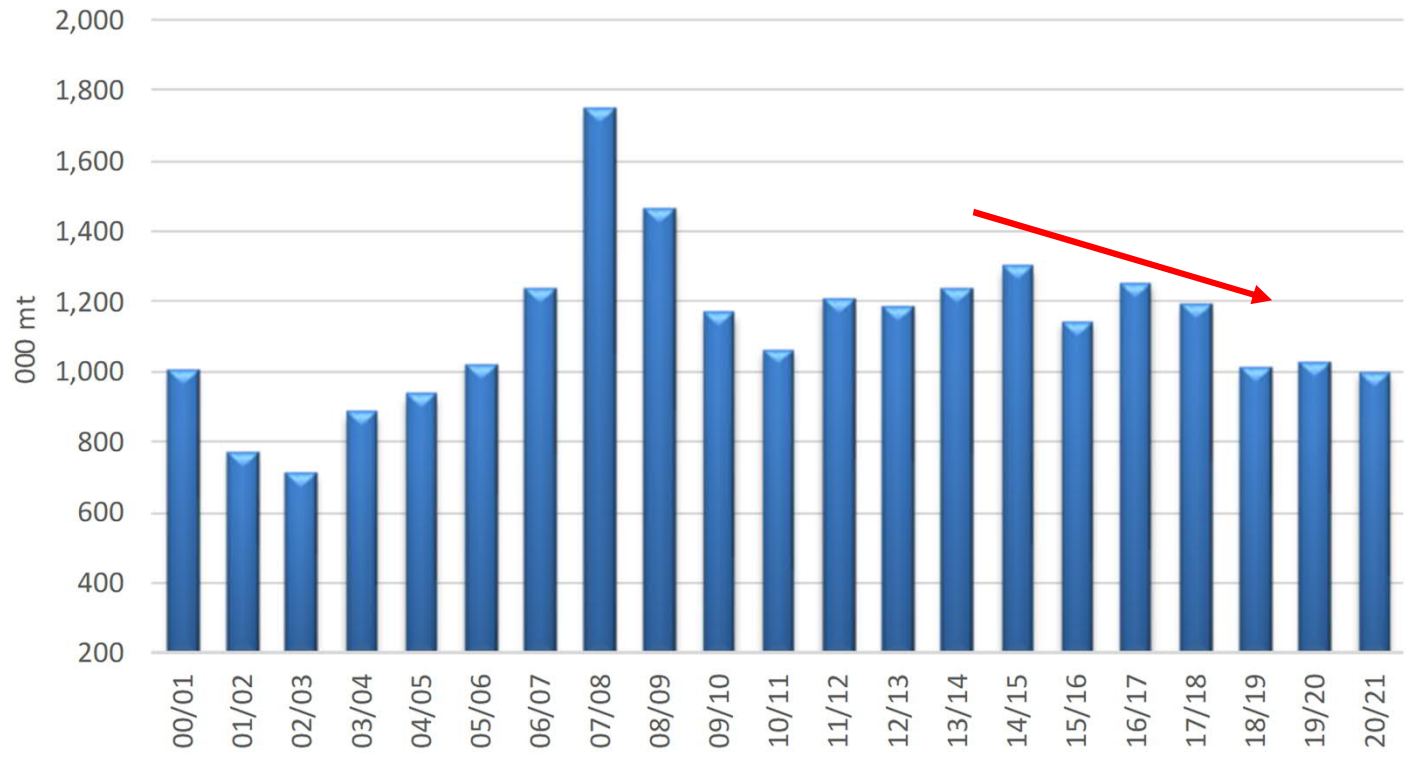
Implied Canada Oat Exports to U.S. Milling Markets

Implied Canadian Oat Exports to U.S. Oat Milling States

000 mt	16/17	17/18	18/19	19/20	20/21	5 yr avg	CAGR 5 yr	% of total	Year to-date (Aug-Mar)			
									21/22	20/21	Chge	MT Chge
Iowa	447	469	472	429	467	457	0.9%	42%	294	344	-14.5%	(49.7)
Minnesota	296	331	255	399	392	334	5.8%	30%	252	358	-29.8%	(106.6)
Nebraska	153	100	74	50	11	78	-40.7%	7%	11	10	3.7%	0.4
Oregon	56	55	61	57	61	58	1.8%	5%	42	42	-0.6%	(0.3)
Puerto Rico	-	-	5	-	-	1		0%	2	-	0.0%	1.8
Wisconsin	303	244	147	93	70	171	-25.4%	16%	70	53	31.2%	16.6
Grand Total	1,255	1,198	1,013	1,028	1,002	1,099	-4.4%	100%	670	807	-17.1%	(137.8)

- Iowa - PepsiCo/Quaker & Grain Millers
- Minnesota- General Mills, includes oats stored in Mpls and Duluth
- Wisconsin – Lacrosse Milling, includes oats stored in Superior
- Nebraska – Richardson’s Milling
- Oregon – Grain Millers

Implied Canadian Oat Exports to US Milling Market

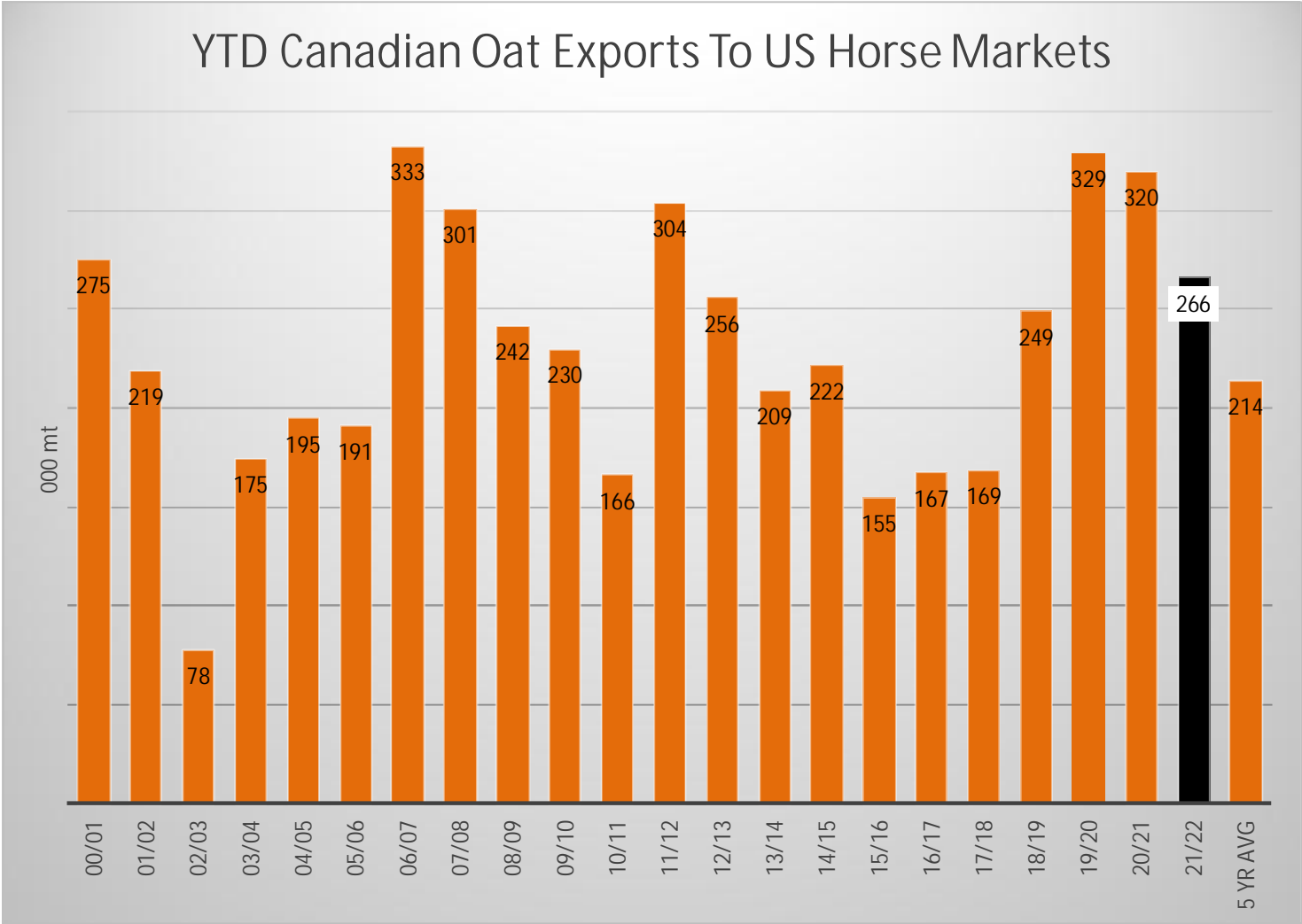


Implied Canada Oat Exports to U.S. Horse/Equine Markets

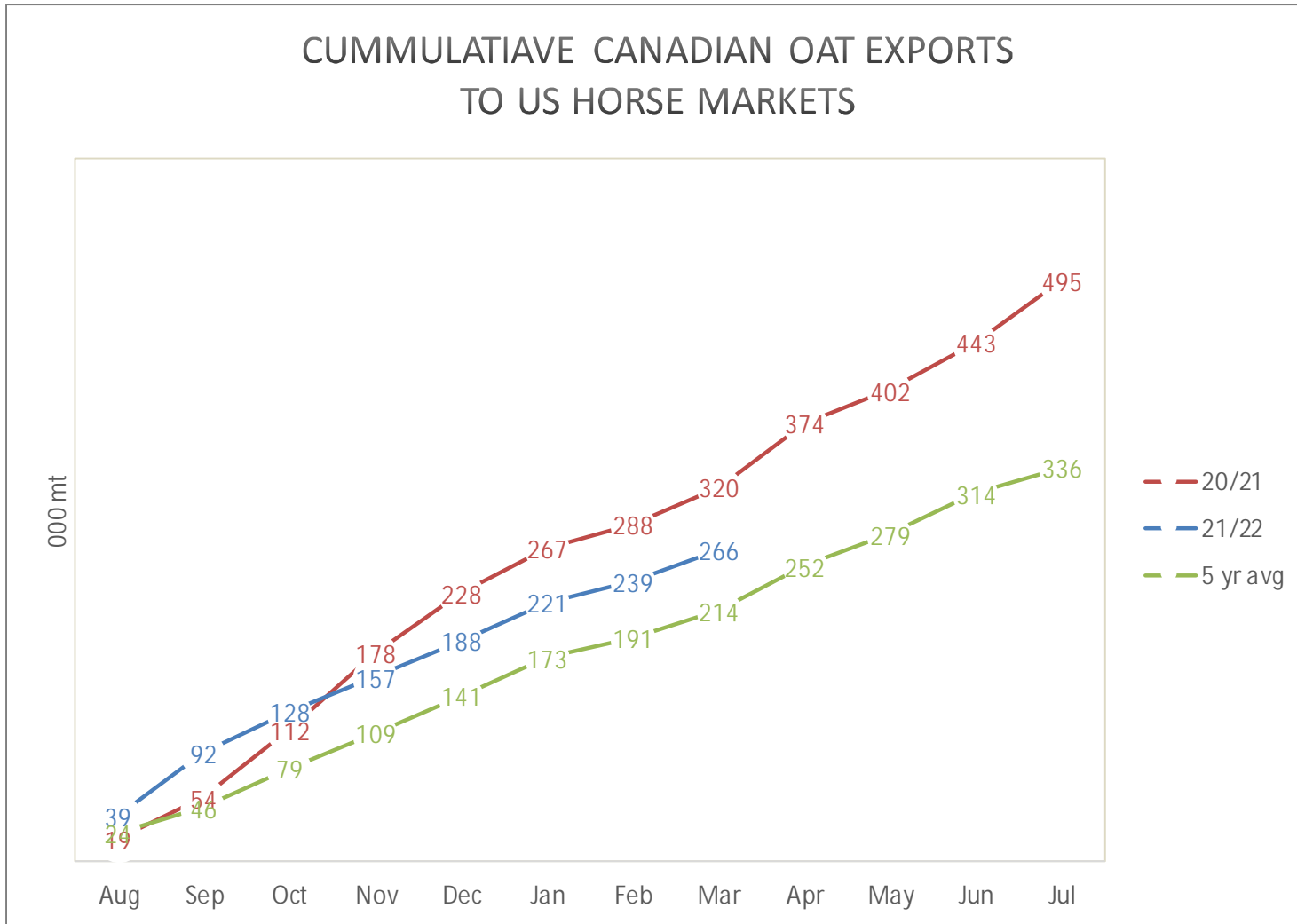
Implied Canadian Oat Exports to U.S. Equine States

metric tonnes										Year to-date (Aug-Mar)			
	15/16	16/17	17/18	18/19	19/20	20/21	5 yr avg	CAGR 5 yr	% of total	21/22	20/21	Chge	MT Chge
Alabama	-	-	-	-	-	587	117.5		0.0%	590.2	-	0.0%	590.2
Alaska	100	-	7	-	-	-	1.3		0.0%	-	-	0.0%	0.0
Arizona	2,365	2,036	2,084	1,329	788	919	1,431.3	-7.2%	0.4%	892.0	663.9	34.3%	228.0
Arkansas	105	28	29	45	77	77	51.3	-36.8%	0.0%	128.7	77.0	67.2%	51.8
California	20,290	25,236	23,244	21,841	20,453	20,321	22,218.7	1.0%	5.7%	13,563.9	14,674.7	-7.6%	(1,110.7)
Colorado	1,085	2,085	4,048	4,724	4,027	3,543	3,685.4	-9.6%	0.9%	2,443.9	2,340.5	4.4%	103.4
Connecticut	-	13	24	177	70	79	72.5	-27.3%	0.0%	-	53.9	-100.0%	(53.9)
Delaware	200	185	229	235	231	241	224.0	43.2%	0.1%	169.8	150.1	13.1%	19.7
Florida	1,406	2,389	231	454	132	408	722.6	-1.1%	0.2%	943.2	114.3	725.2%	828.9
Georgia	703	925	38	167	126	136	278.6	-0.6%	0.1%	106.1	59.0	79.9%	47.2
Idaho	7,153	6,678	4,656	7,143	9,444	13,031	8,190.2	-10.3%	2.1%	9,489.1	9,877.9	-3.9%	(388.8)
Illinois	4,763	1,902	9,807	15,371	7,461	10,644	9,036.9	-40.0%	2.3%	2,168.8	8,372.4	-74.1%	(6,203.6)
Indiana	1,189	2,201	2,328	3,033	2,892	1,990	2,488.9	3.6%	0.6%	982.5	1,362.3	-27.9%	(379.7)
Kansas	806	600	43	494	1,203	1,630	794.0	-19.5%	0.2%	943.8	816.0	15.7%	127.8
Kentucky	6,320	5,094	16,432	19,140	27,419	27,271	19,071.1	-29.0%	4.9%	20,395.8	15,908.7	28.2%	4,487.0
Louisiana	1,061	3,787	4,516	3,318	2,512	819	2,990.6	30.1%	0.8%	382.7	628.6	-39.1%	(245.9)
Maine	267	135	248	258	157	507	261.1	-22.2%	0.1%	190.0	141.9	33.9%	48.1
Maryland	1,490	1,450	1,597	296	466	535	868.7	5.0%	0.2%	491.1	353.1	39.1%	138.0
Massachusetts	138	219	412	298	253	171	270.4	4.7%	0.1%	212.9	80.5	164.4%	132.4
Michigan	473	2,614	1,907	1,526	2,130	2,055	2,046.3	43.1%	0.5%	1,487.4	1,219.9	21.9%	267.5
Mississippi	20	-	-	-	653	1,789	488.4	-100.0%	0.1%	371.6	866.0	-57.1%	(494.4)
Missouri	264	3,124	13,448	32,991	24,905	11,943	17,282.2	-10.1%	4.4%	5,128.0	5,083.3	0.9%	44.7
Montana	3,828	2,226	2,351	2,898	5,813	3,379	3,333.3	-29.0%	0.9%	4,175.7	1,999.3	108.9%	2,176.4
Nevada	-	-	-	-	2	-	0.4		0.0%	-	-	0.0%	0.0
New Hampshire	-	52	-	-	-	8	12.1	-2.9%	0.0%	8.2	8.2	0.0%	0.0
New Jersey	144	149	27	62	26	-	53.0	4.3%	0.0%	-	-	0.0%	0.0
New Mexico	2,702	2,789	2,821	3,794	8,255	4,762	4,484.1	16.3%	1.2%	3,065.2	3,645.4	-15.9%	(580.2)
New York	6,514	6,673	12,432	10,619	11,629	9,679	10,206.6	8.6%	2.6%	4,844.5	6,441.3	-24.8%	(1,596.8)
North Carolina	-	535	366	175	264	135	294.8	27.5%	0.1%	20.0	92.1	-78.3%	(72.2)
North Dakota	22,175	22,355	17,121	37,852	61,332	74,121	42,556.0	-9.0%	10.9%	39,001.3	51,206.9	-23.8%	(12,205.6)
Ohio	99,970	103,496	93,909	170,979	205,678	205,413	155,895.3	-1.4%	40.0%	105,870.0	124,372.6	-14.9%	(18,502.6)
Oklahoma	593	970	2,470	8,548	6,662	6,528	5,035.4	0.3%	1.3%	1,341.4	4,746.7	-71.7%	(3,405.3)
Pennsylvania	24,933	24,095	23,014	19,823	23,963	22,564	22,691.7	-8.8%	5.8%	12,004.0	15,964.3	-24.8%	(3,960.3)
South Carolina	298	617	127	919	85	82	366.1		0.1%	19.1	82.1	-76.8%	(63.0)
South Dakota	601	10,242	19,623	21,242	23,211	16,254	18,114.3	-13.9%	4.7%	14,921.9	10,200.4	46.3%	4,721.5
Tennessee	-	82	-	3,400	4,649	5,577	2,741.6	16.8%	0.7%	1,858.1	3,615.9	-48.6%	(1,757.8)
Texas	901	8,755	8,430	20,178	17,085	34,112	17,711.9	33.9%	4.5%	6,986.4	26,311.2	-73.4%	(19,324.8)
Utah	2,670	2,837	2,752	3,246	3,388	3,277	3,100.0	-2.4%	0.8%	2,646.6	1,982.1	33.5%	664.5
Vermont	3,318	2,936	3,562	3,493	2,252	2,401	2,928.8	-4.0%	0.8%	1,652.6	1,595.1	3.6%	57.5
Virginia	2,058	2,111	1,475	1,596	1,979	1,819	1,795.9	19.7%	0.5%	884.0	1,227.8	-28.0%	(343.8)
Washington, state	6,221	4,570	5,180	5,385	3,585	5,376	4,819.4	-2.5%	1.2%	4,520.1	2,624.5	72.2%	1,895.5
West Virginia	-	-	-	-	-	-	-		0.0%	-	-	0.0%	0.0
Wyoming	1,262	709	523	670	1,087	989	795.6	38.0%	0.2%	949.5	608.1	56.1%	341.4
Unknown states	-	13	-	8	-	-	4.2		0.0%	-	-	0.0%	0.0
Grand Total	228,388	256,911	281,512	427,726	486,342	495,170	389,532.2	-6.1%	100%	265,850.0	319,567.9	-16.8%	(53,717.9)

YTD Canadian Oat Exports To US Horse Markets



CUMMULATIIVE CANADIAN OAT EXPORTS TO US HORSE MARKETS



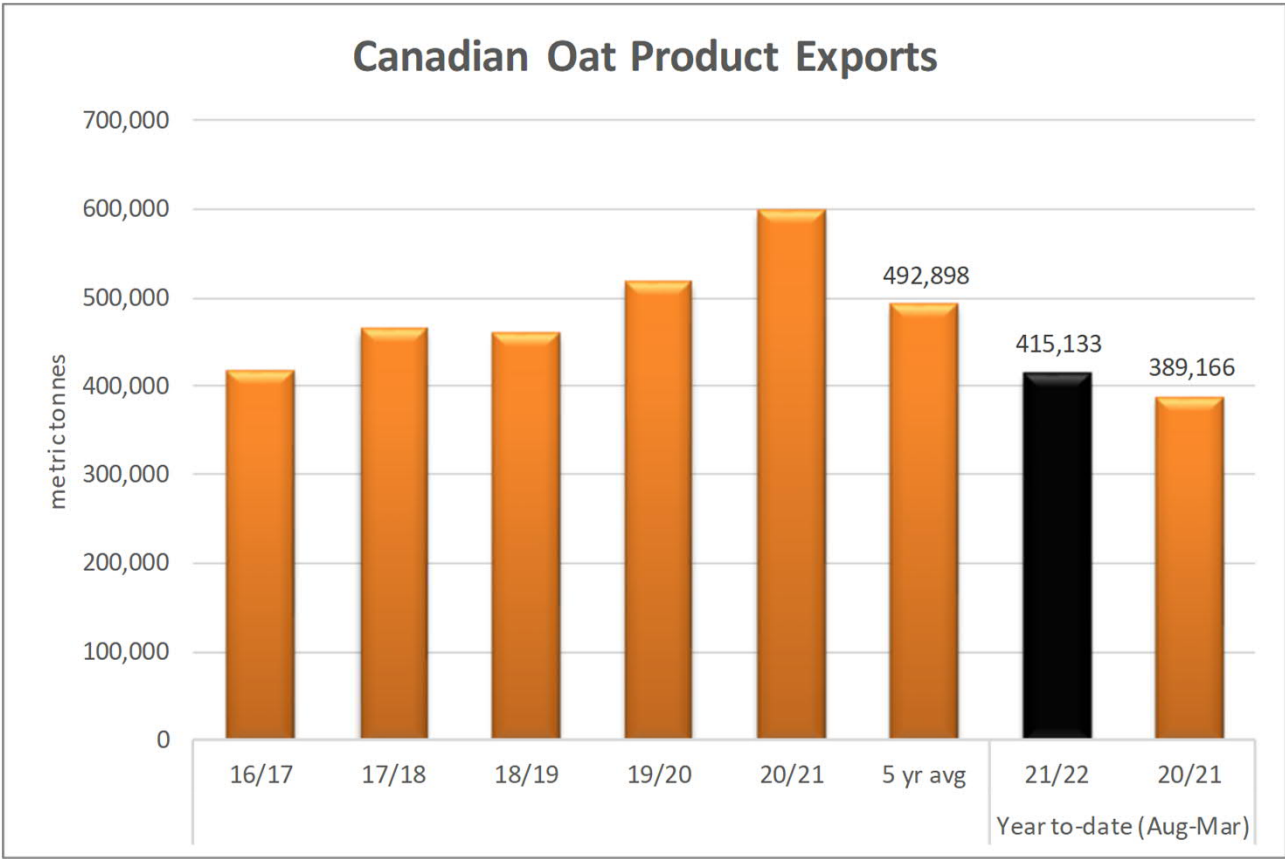
Year to-date (Aug-Mar)

Oat Product Exports



Canadian Oat Product Exports - Top 15

metric tonnes	Crop Year Aug-Jul								Year to-date (Aug-Mar)			
	16/17	17/18	18/19	19/20	20/21	5 yr avg	5 yr CAGR	% of total	21/22	20/21	Chge	MT Chge
Malaysia	773	836	1,088	1,331	1,163	1,038	8.5%	0.2%	1,291	645	100.2%	646.3
Jamaica	3,213	2,885	2,589	3,060	3,268	3,003	0.3%	0.6%	943	2,570	-63.3%	(1,626.8)
Australia	2,329	659	1,577	2,949	1,161	1,735	-13.0%	0.4%	65	913	-92.9%	(848.0)
China	1,413	1,773	2,616	1,613	1,019	1,687	-6.3%	0.3%	532	822	-35.3%	(290.1)
Colombia	198	436	258	4,777	5,701	2,274	95.7%	0.5%	-	3,987	-100.0%	(3,987.5)
France	1,583	392	669	304	80	605	-45.0%	0.1%	6	4	44.2%	1.7
Guatemala	330	232	283	1,187	1,075	621	26.6%	0.1%	1,994	991	101.2%	1,003.3
Dominican Republic	483	173	26	762	1,067	502	17.2%	0.1%	-	988	-100.0%	(987.5)
United States of America	359,698	397,957	399,238	443,960	510,899	422,350	7.3%	85.7%	374,125	326,085	14.7%	48,040.1
Philippines	390	564	576	954	980	693	20.2%	0.1%	138	807	-82.9%	(669.2)
New Zealand	655	464	691	1,096	591	699	-2.0%	0.1%	346	507	-31.7%	(160.9)
Trinidad and Tobago	535	662	706	1,097	1,024	805	13.9%	0.2%	701	733	-4.4%	(32.2)
Mexico	40,367	52,391	44,668	46,078	56,772	48,055	7.1%	9.7%	27,226	39,342	-30.8%	(12,116.0)
Korea, South	805	457	142	740	661	561	-3.9%	0.1%	1,135	363	212.8%	772.1
Japan	2,178	1,410	2,727	4,033	4,656	3,001	16.4%	0.6%	3,421	2,932	16.7%	489.1
Venezuela	409	817	-	213	4,180	1,124	59.2%	0.2%	90	3,273	-97.3%	(3,182.6)
Grand Total	419,748	465,589	461,251	518,194	599,709	492,898	7.4%	100.0%	415,133	389,166	6.7%	25,966.7



Provincial Oat Product Exports

metric tonnes	Crop Year Aug-Jul							Year to-date (Aug-Mar)				
	16/17	17/18	18/19	19/20	20/21	5 yr avg	5 yr CAGR	% of total	21/22	20/21	Chge	MT Chge
Alberta	62,422.4	80,423.0	73,363.1	80,171.2	91,957.1	77,667.3	8.1%	17.5%	54,793.3	60,970.4	-10.1%	(6,177.1)
British Columbia	2,617.3	1,823.1	2,844.4	4,398.2	8,565.8	2,496.0	6.1%	0.6%	4,760.0	5,844.8	-18.6%	(1,084.8)
Manitoba	174,699.6	187,107.6	187,704.2	201,341.7	196,019.4	186,691.5	-0.6%	42.0%	122,837.8	134,017.9	-8.3%	(11,180.1)
Saskatchewan	164,599.5	176,641.7	181,908.6	212,540.1	273,483.4	163,262.5	5.1%	36.7%	211,098.8	169,332.6	24.7%	41,766.2
Quebec	2,136.3	2,369.7	1,707.9	3,289.5	3,889.2	1,940.8	-0.8%	0.4%	2,728.3	2,673.9	2.0%	54.4
Nova Scotia	1.7	41.4	3.0	36.9	3.8	123.3	-62.0%	0.0%	106.2	2.9	3514.0%	103.2
New Brunswick	191.9	90.1	-	-	34.7	113.4	-100.0%	0.0%	98.2	4.7	1978.5%	93.5
Ontario	13,079.0	17,092.3	13,720.2	16,416.1	25,755.2	12,391.1	15.2%	2.8%	18,709.8	16,318.3	14.7%	2,391.5
Prince Edward Island	-	-	-	-	-	-		0.0%	-	-	0.0%	0.0
Nunavut	-	-	-	-	-	3.4		0.0%	-	-	0.0%	0.0
Newfoundland and Labrador	-	-	-	0.2	0.4	0.0	-100.0%	0.0%	0.2	0.3	-29.7%	(0.1)
Grand Total	419,747.8	465,588.8	461,251.4	518,194.0	599,709.0	444,689.3	2.9%	100.0%	415,132.6	389,165.8	6.7%	25,966.7

Canada Oat Product Exports

metric tonnes	Crop year Aug-Jul						5 yr avg	% of total	Year to-date (Aug-Mar)			
	16/17	17/18	18/19	19/20	20/21	21/22			20/21	Chge	MT Chge	
Oat groats and meal	227.0	202.3	166.6	184.5	223.9	200.8	-0.3%	40.7%	137.9	149.2	-7.6%	(11.3)
Oats, hulled,pearled,sliced or kibbled	55.4	114.7	151.8	175.6	212.7	142.0	30.9%	28.8%	163.9	128.8	27.2%	35.0
Oats, rolled or flaked grains	137.3	148.6	142.9	158.1	163.1	150.0	3.5%	30.4%	113.4	111.1	2.0%	2.3
Grand Total	419.7	465.6	461.3	518.2	599.7	492.9	7.4%	100.0%	415.1	389.2	6.7%	26.0

